

Animal Puzzles



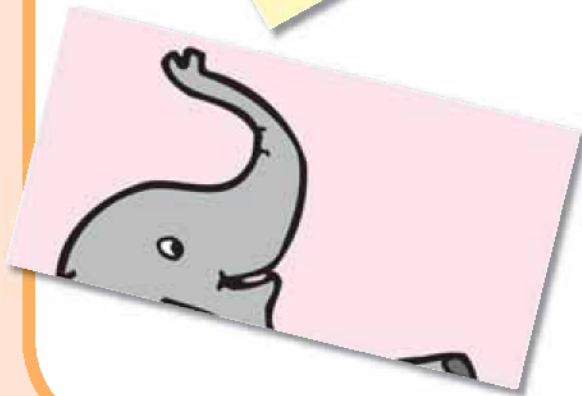
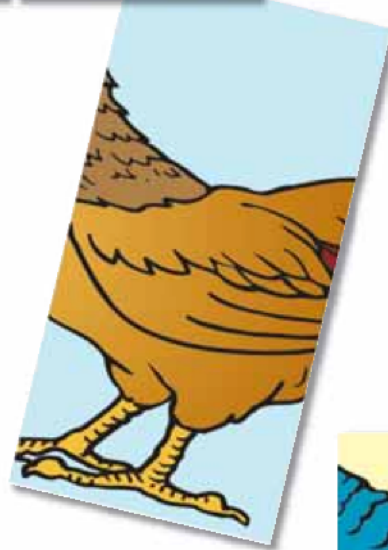
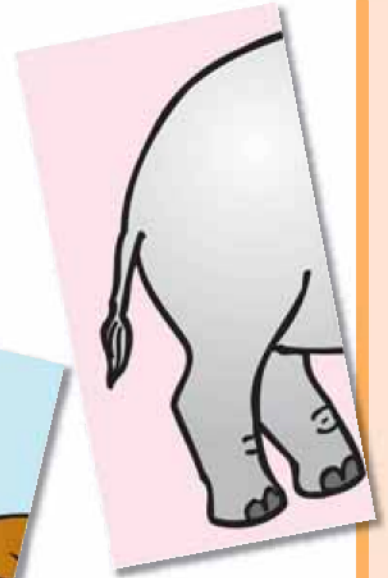
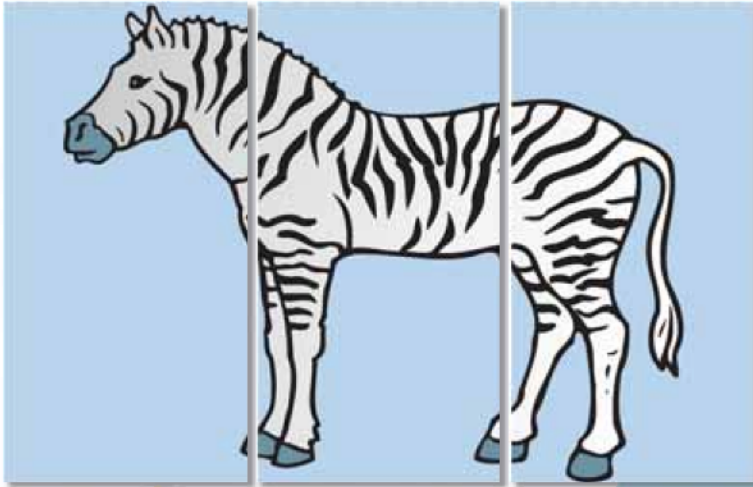
Preparing the Center

1. Prepare a folder following the directions on page 3.
Cover—page 169
Student Directions—page 171
Puzzle Pieces—pages 173–177
2. Reproduce the record sheet on page 179.
Place copies in the left-hand pocket of the folder.
3. Place the envelope of puzzle pieces in the right-hand pocket of the folder.

Using the Center

1. The student takes the puzzle pieces and puts them together to make animals.
2. The student uses the self-checking puzzle pieces to check his or her answers. The back of each set of pieces has a picture of the complete animal.
3. Then the student completes the record sheet by cutting and gluing the missing parts in place.

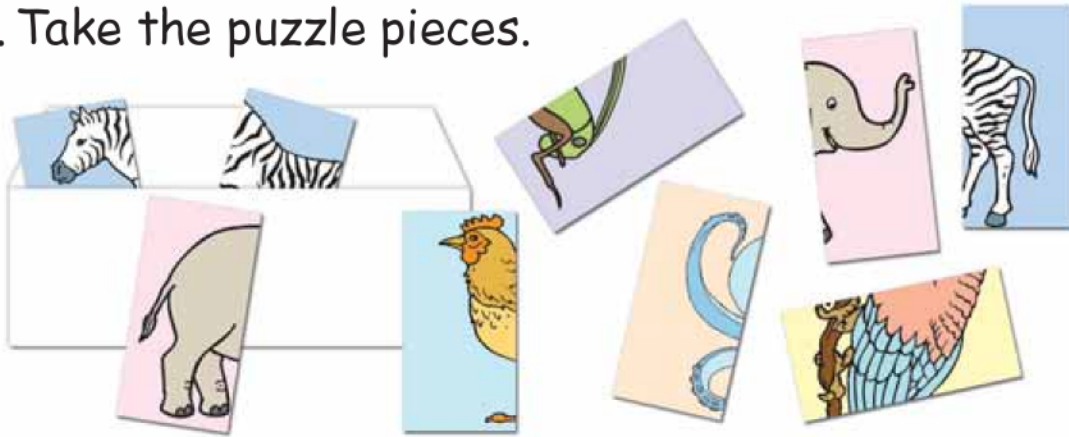
Animal Puzzles



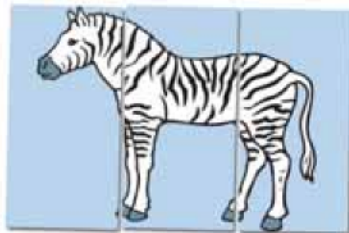
Animal Puzzles

Follow these steps:

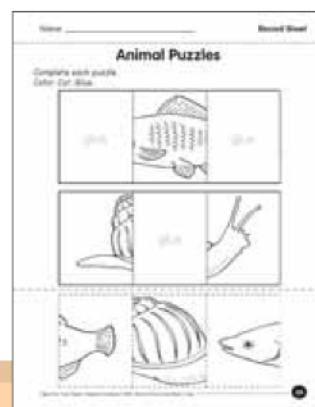
1. Take the puzzle pieces.

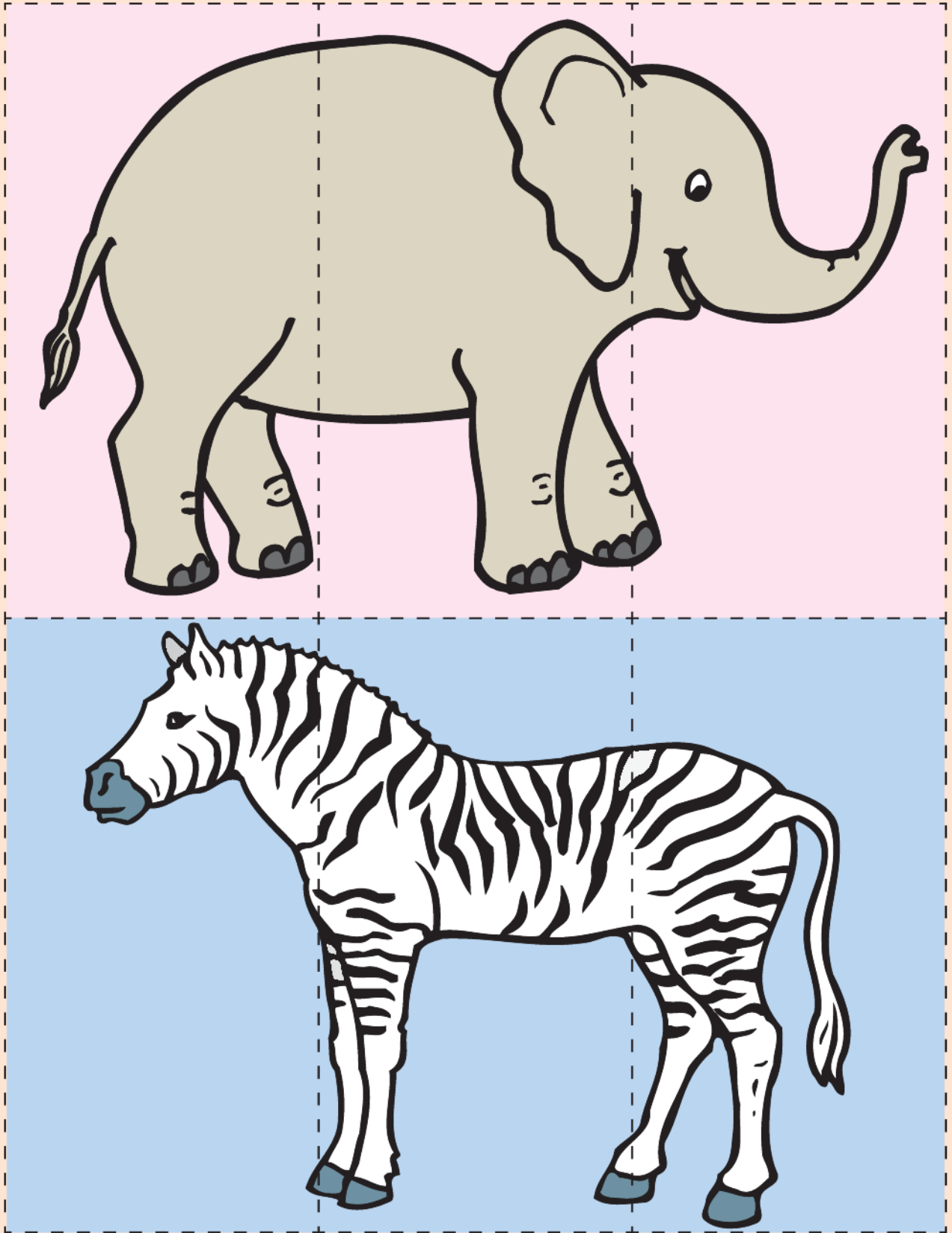


2. Put the pieces together to make an animal.



3. Take the record sheet.
Color. Cut. Glue.







© Evan-Moor Corp.



© Evan-Moor Corp.



© Evan-Moor Corp.



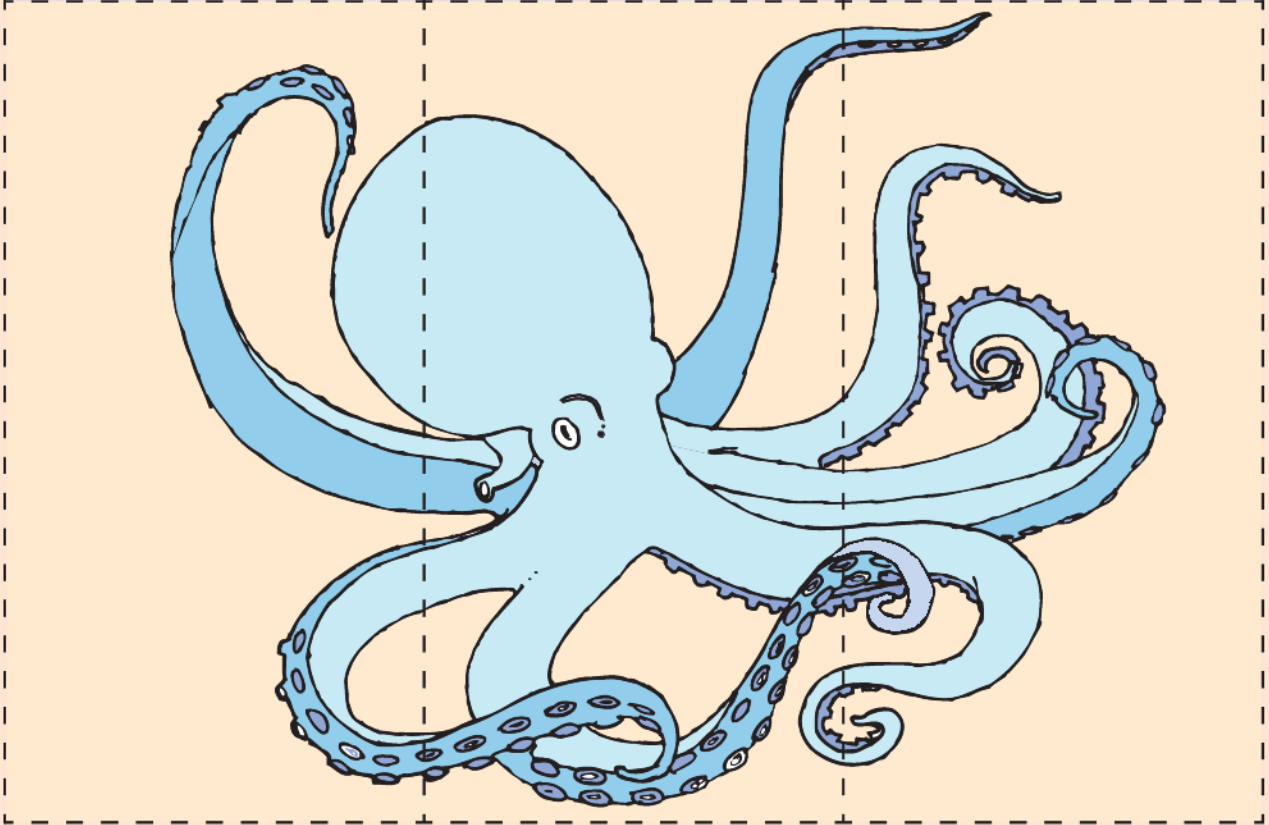
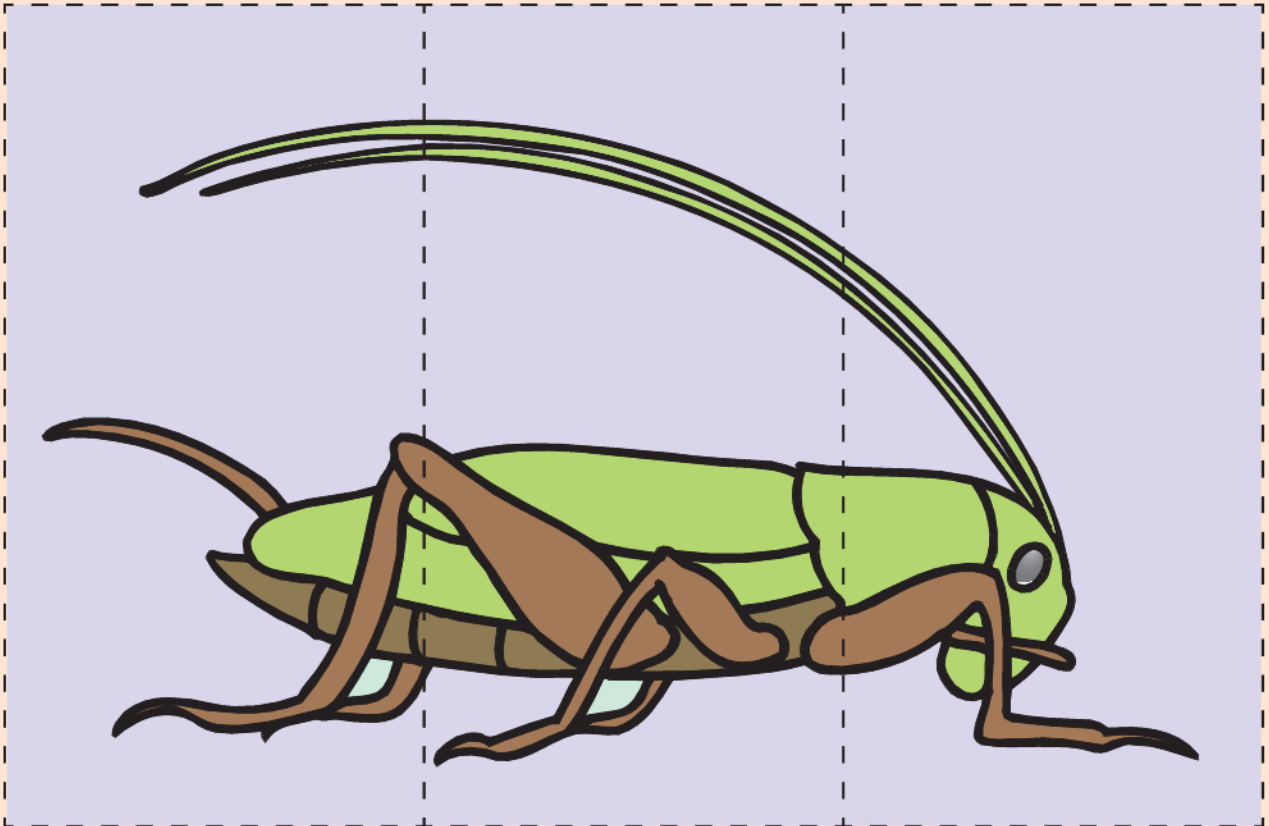
© Evan-Moor Corp.



© Evan-Moor Corp.



© Evan-Moor Corp.





© Evan-Moor Corp.



© Evan-Moor Corp.



© Evan-Moor Corp.



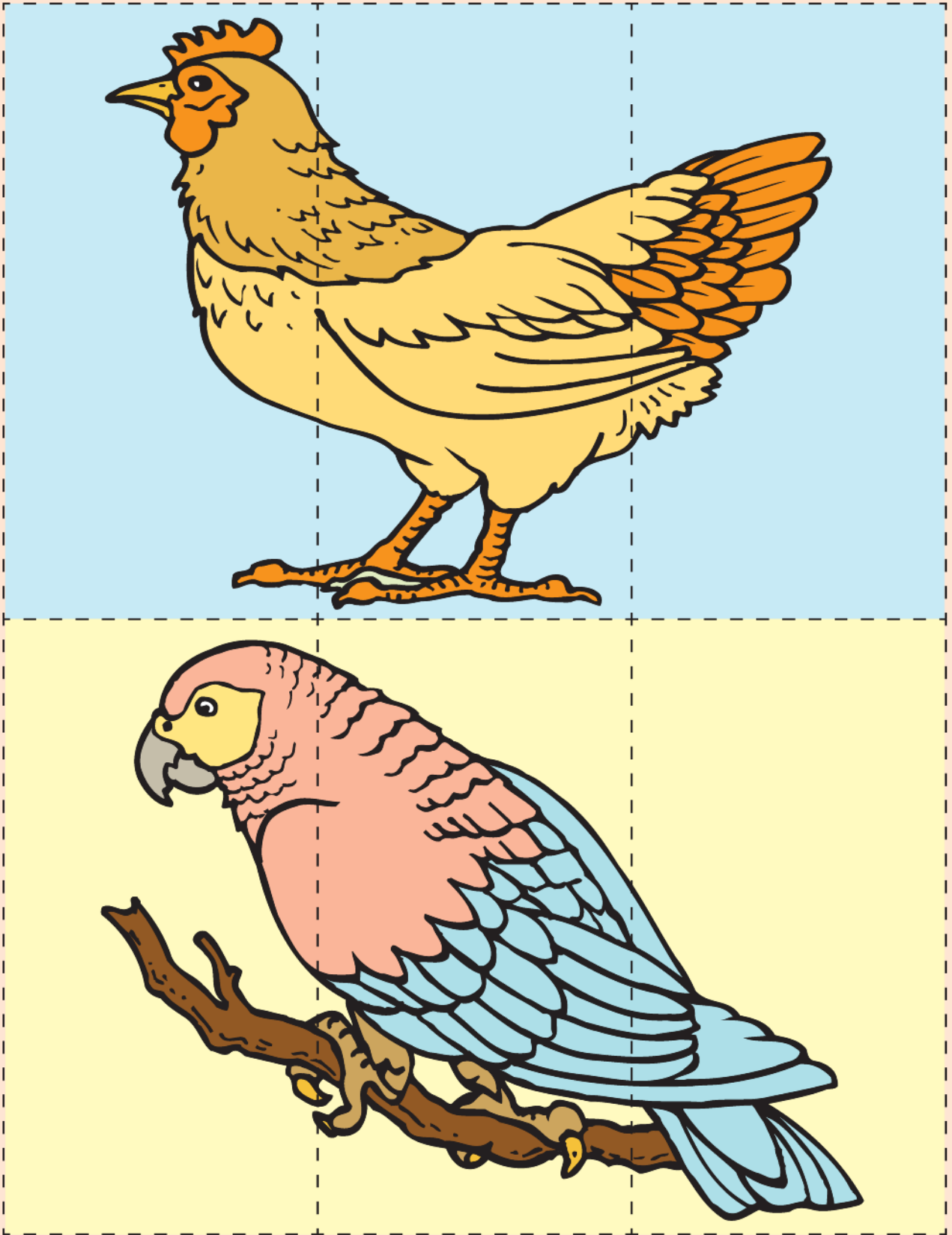
© Evan-Moor Corp.



© Evan-Moor Corp.



© Evan-Moor Corp.





© Evan-Moor Corp.



© Evan-Moor Corp.



© Evan-Moor Corp.



© Evan-Moor Corp.



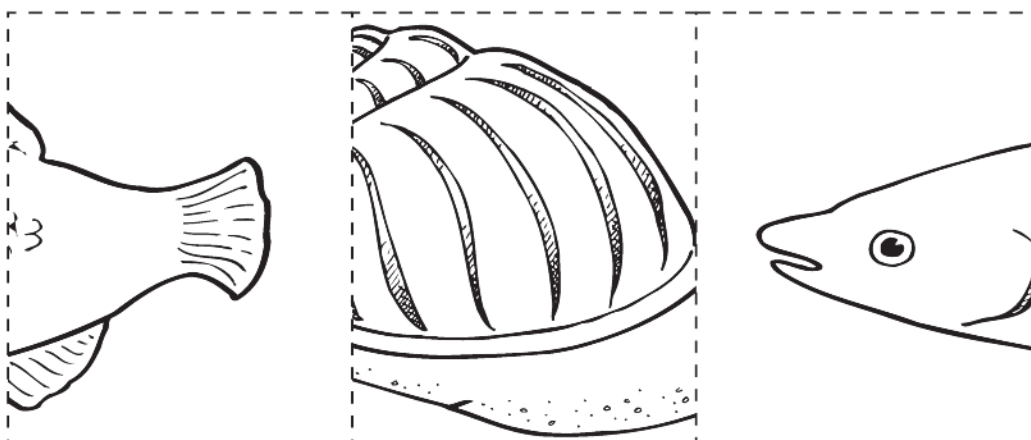
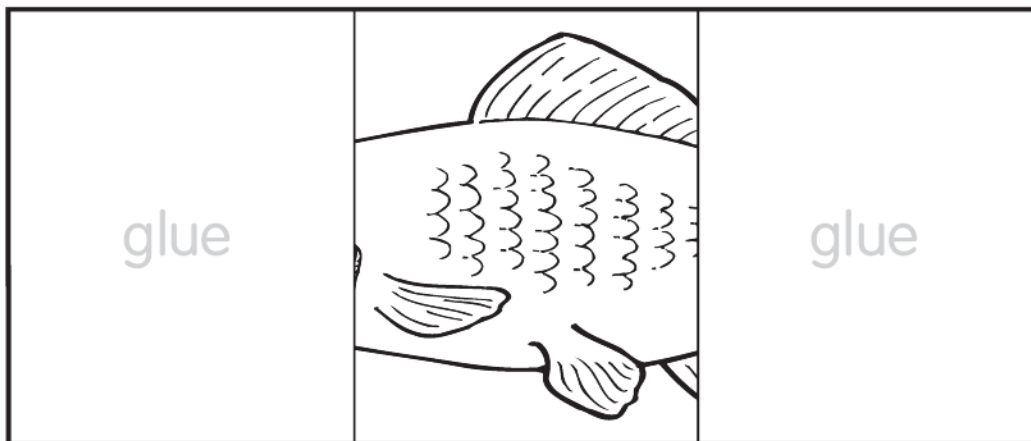
© Evan-Moor Corp.



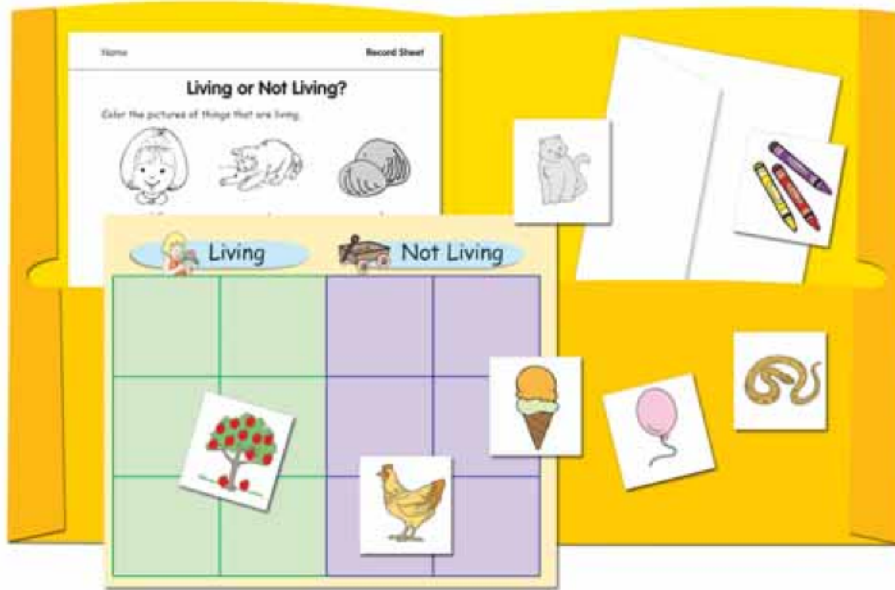
© Evan-Moor Corp.

Animal Puzzles

Complete each puzzle.
Color. Cut. Glue.



Making a File Folder Center



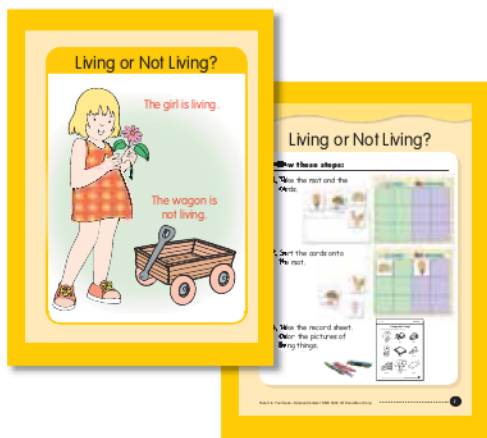
Folder centers are easily stored in a box or file crate. Students take a folder to their desks to complete the task.

Materials

- folder with pockets
- envelopes
- marking pens and pencils
- scissors
- stapler
- two-sided tape

Steps to Follow

1. Laminate the cover. Tape it to the front of the folder.
2. Laminate the student directions page. Tape it to the back of the folder.
3. Reproduce the record sheet. Place record sheets, writing paper, and any other supplies in the left-hand pocket of the folder.
4. Laminate the task cards. Place each set of task cards in an envelope. Place the labeled envelopes in the right-hand pocket of the folder.
5. Laminate the sorting mat(s). Place the mat(s) in the right-hand pocket of the folder.





Thank you for purchasing an Evan-Moor resource!

We appreciate your feedback.

Please review our product and let us know how it worked.

Connect with us on social media for discounts and sales notifications!



/evanmoorcorp



/evanmoor



@evanmoor

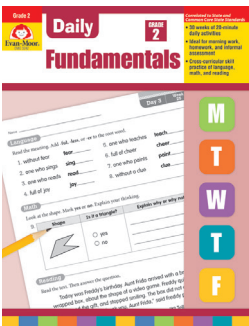


/EvanMoorEducational

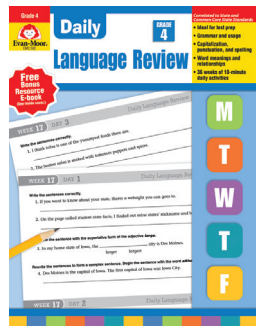


/evanmoor_publisher

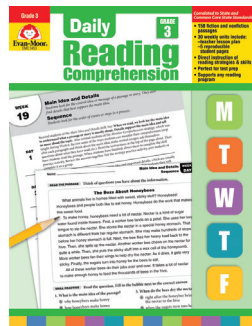
You may be interested in:



Daily Fundamentals



Daily Language Review



Daily Reading Comprehension



History Pockets Moving West



History Pockets Ancient Egypt

Visit our Teachers Pay Teachers Store at www.teacherspayteachers.com/Store/Evan-moor-Educational-Publishers
For printables visit www.evan-moor.com/t/freestuff